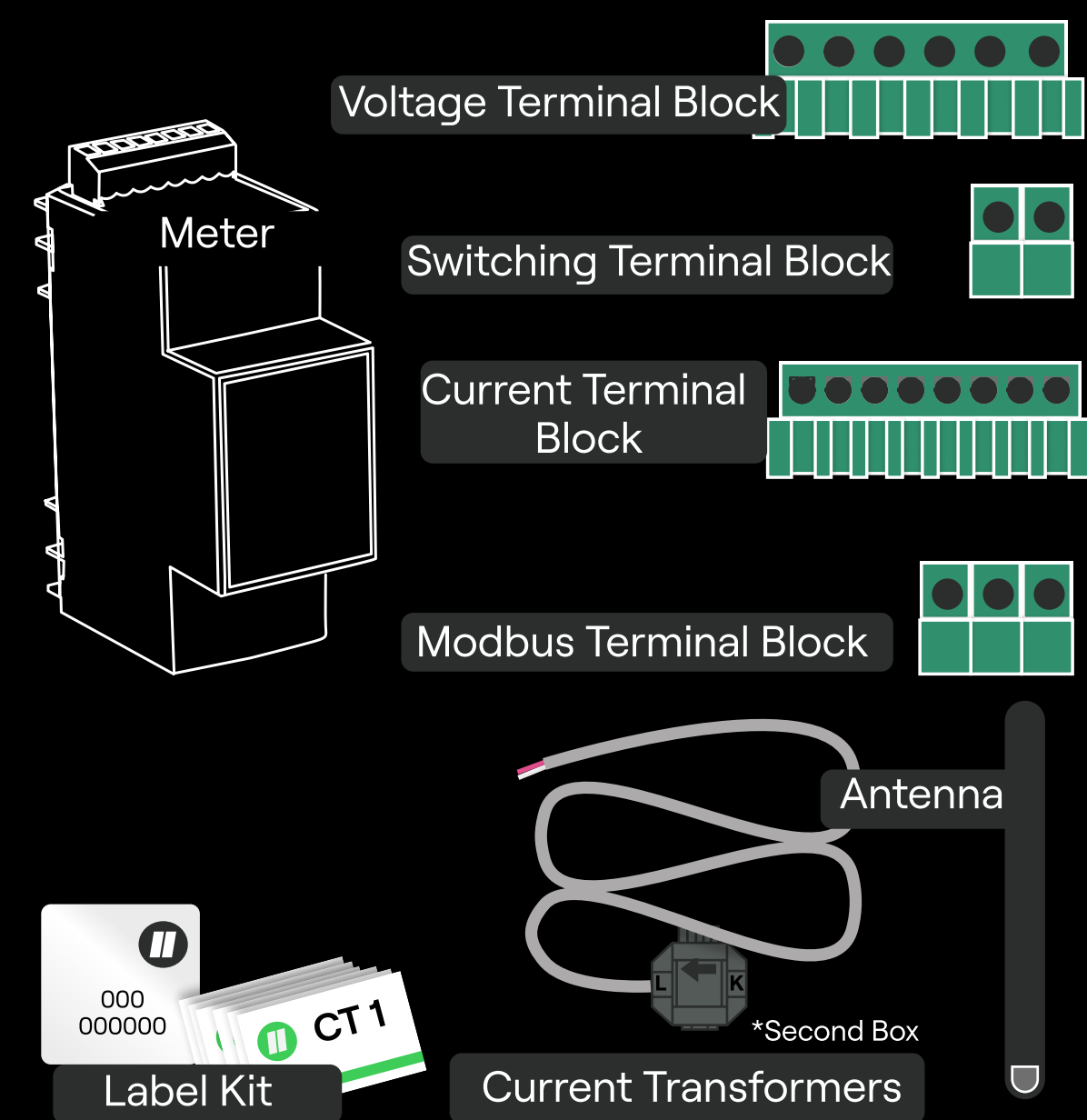


Before You Begin

a. Check Boxes For Correct Equipment



b. The Meter Will Need To Be Powered By A Maximum 10A Breaker

Single phase for single phase homes  
Three phase for three phase homes

c. Plan What Circuits To Measure

Each Meter can measure up to 6 circuits.  
The following circuits **MUST** be monitored if they are on the site:

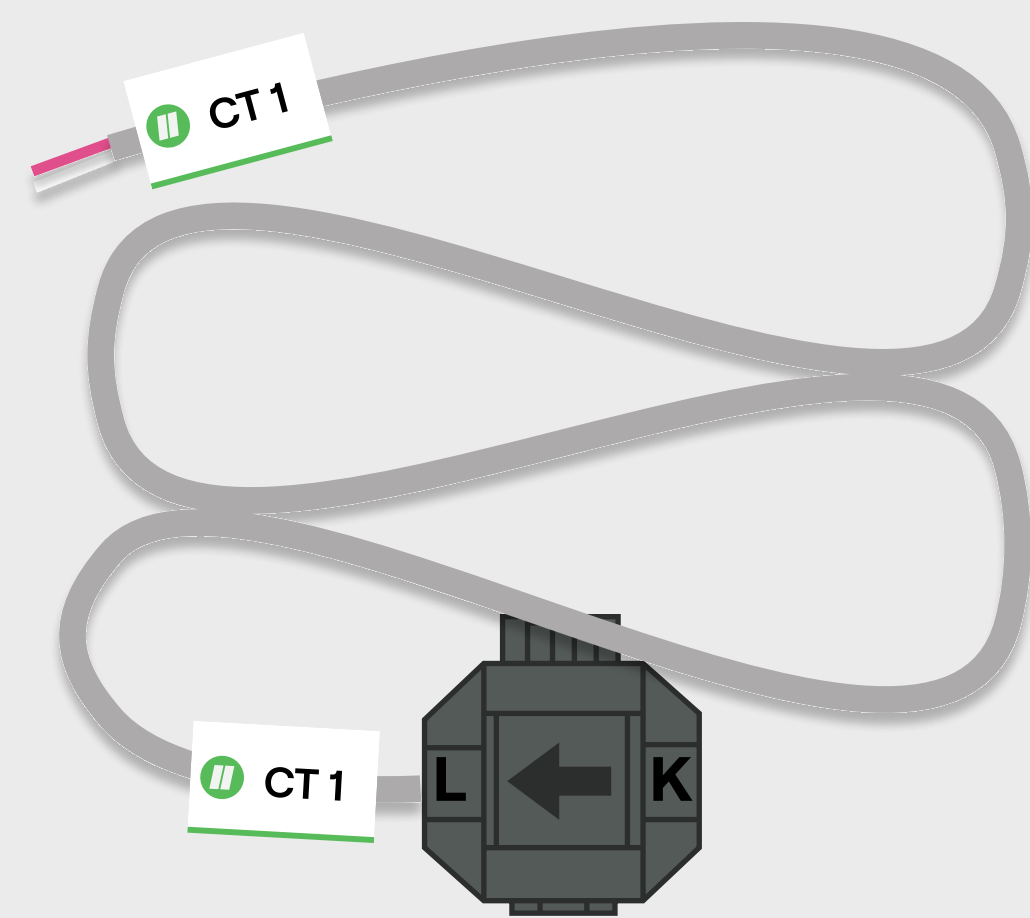
- Each Phase of Grid
- Controlled Loads e.g. Hot Water
- All Solar Circuits
- Batteries

d. Get Your Company A Clipsal Cortex Fleet Account

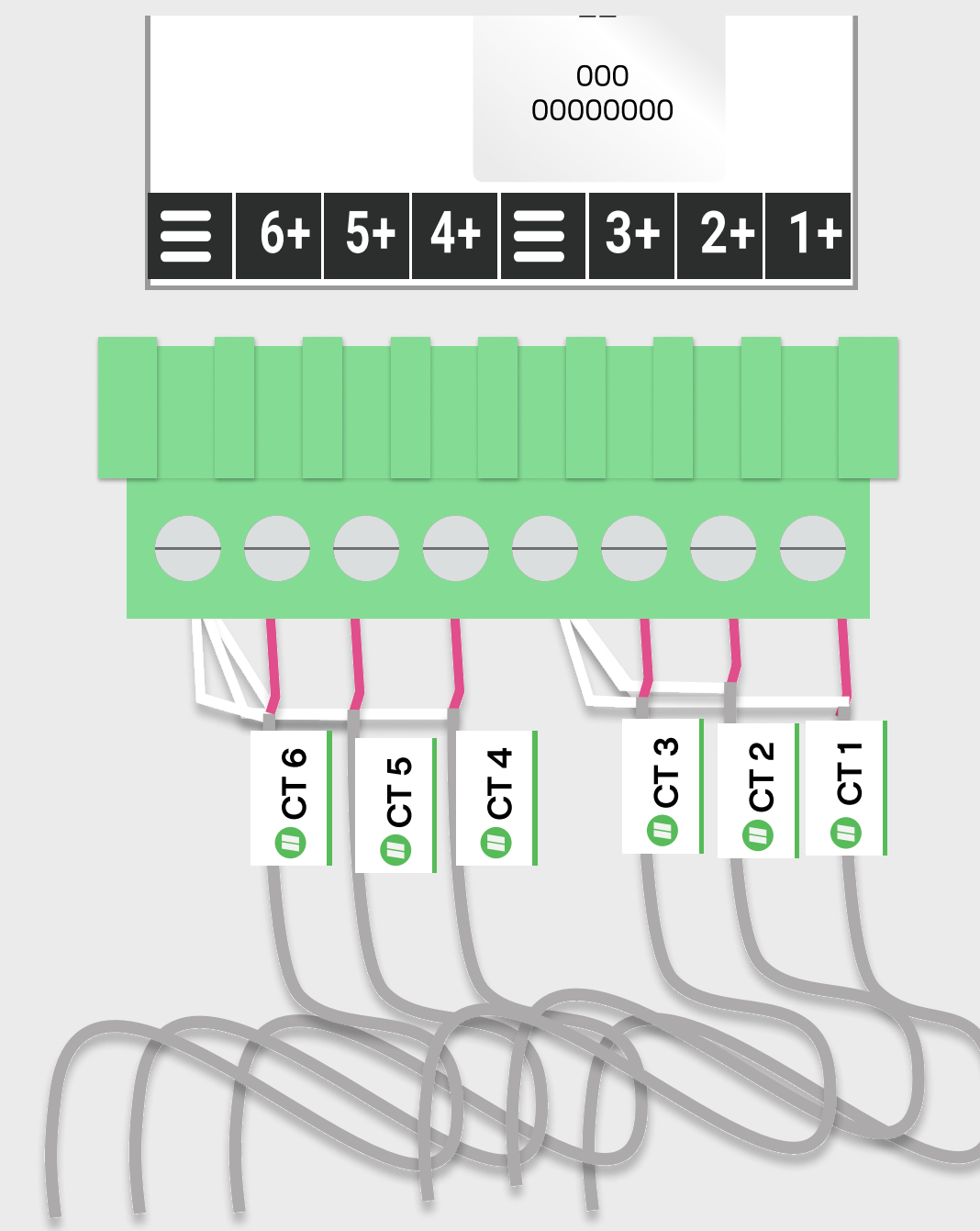


The Meter Must Be Installed By A Licensed Electrician.  
Please Be Sure To Adhere To All Local Standards And Regulations.

1. Apply Labels Numbered 1-6 On The Top And Bottom Of CTs

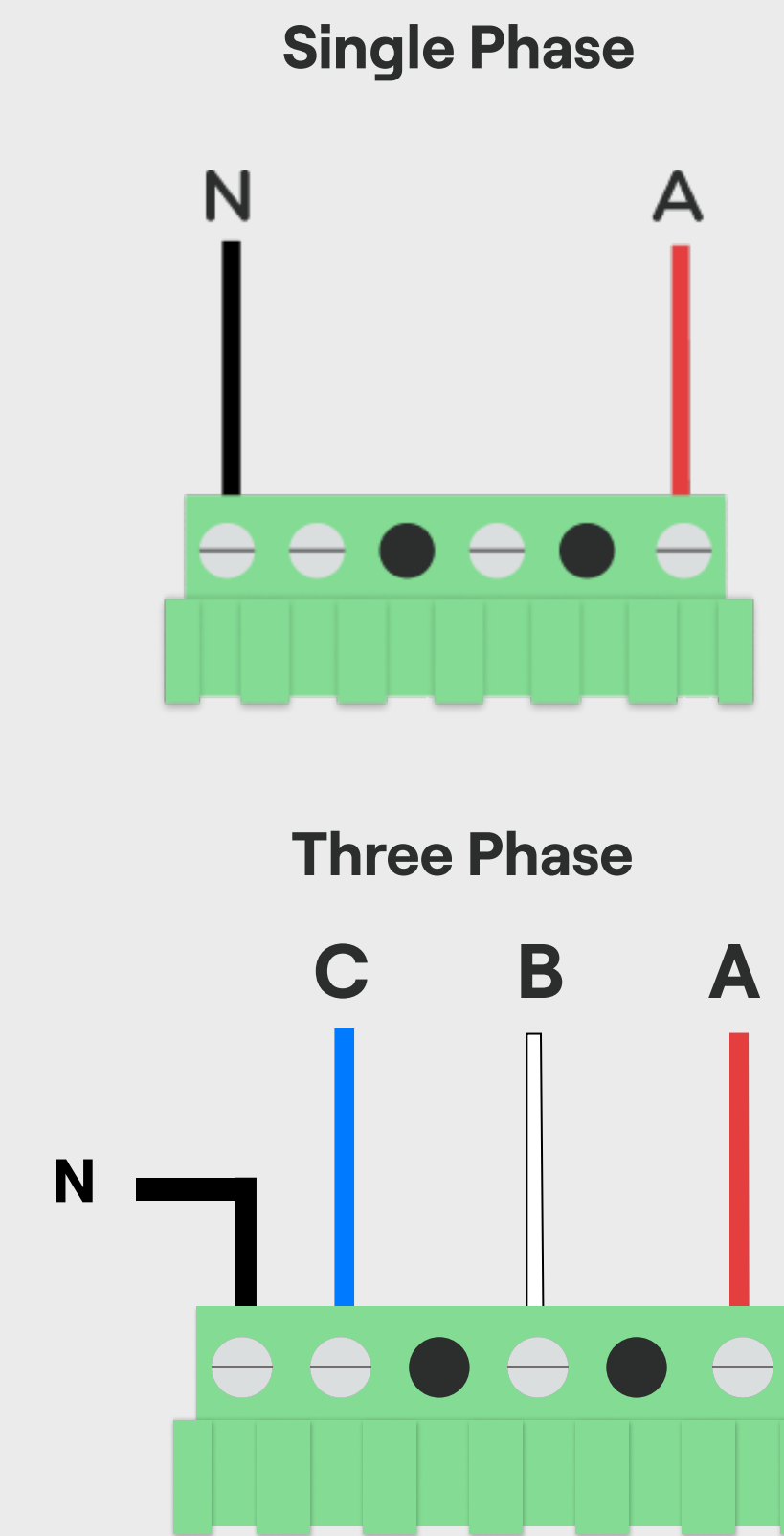


2. Wire CTs To The Terminal Block

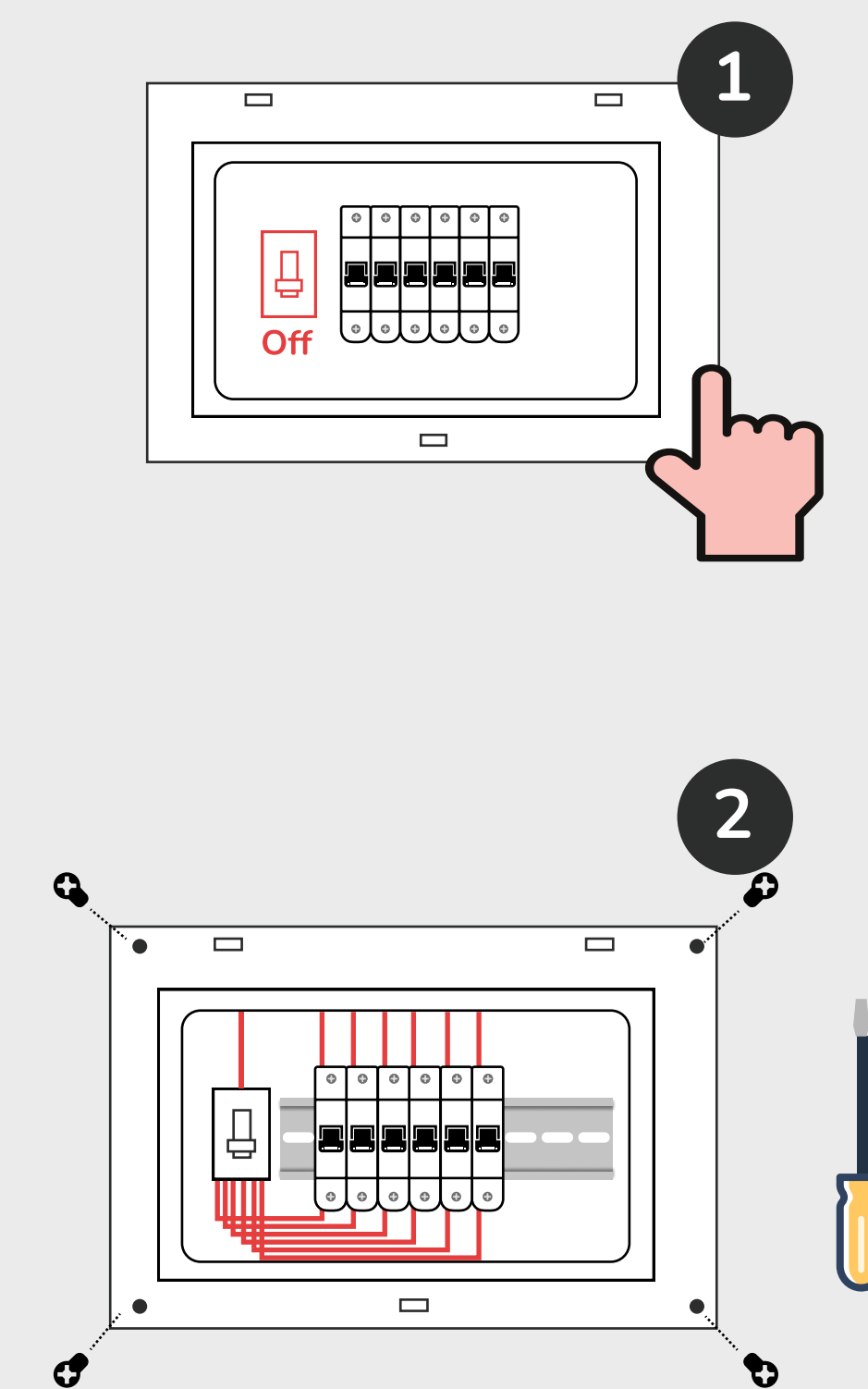


When The CT Terminal Block is plugged into the meter the CTs should be numbered 1-6 from **RIGHT TO LEFT**

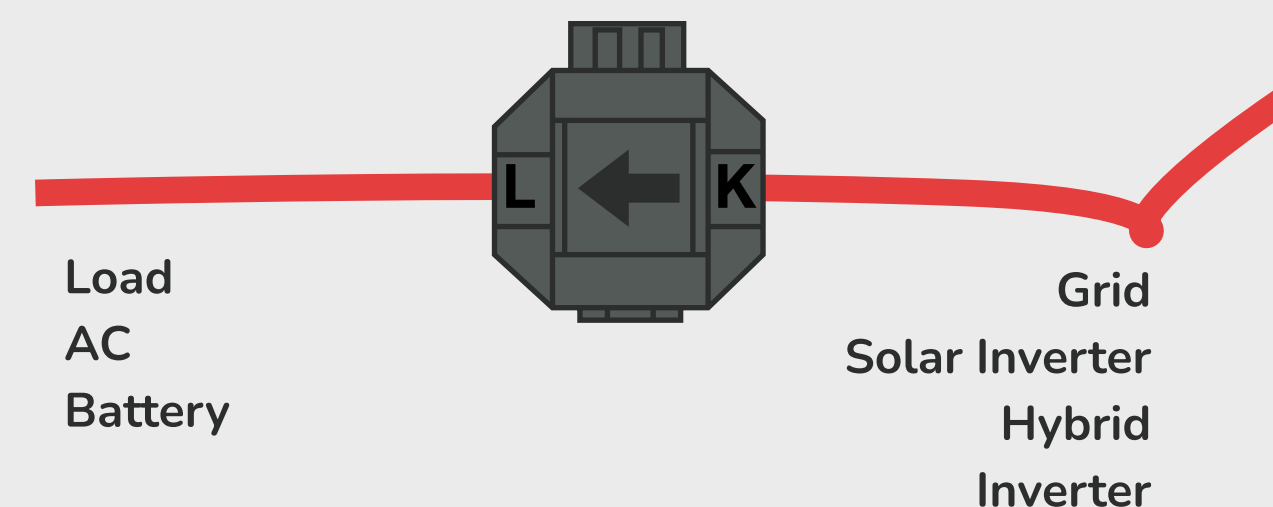
3. Wire Voltage Terminal Block



4. Turn Off Power And Remove Escutcheon



5. Clamp CTs On All 6 Circuits Being Measured

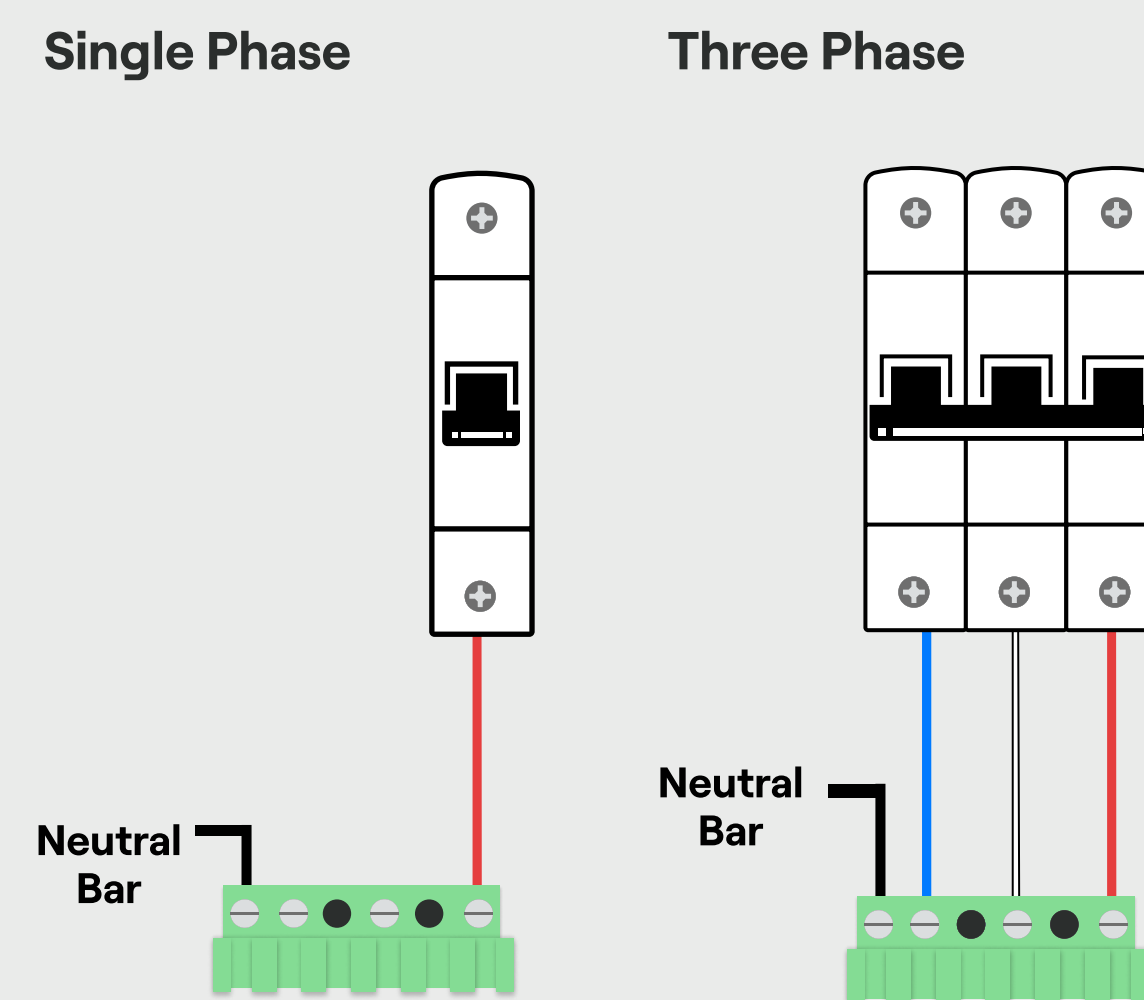


If the CT is measuring a Load or AC Battery the arrow should point **TOWARDS THEM**.

If the CT is measuring the Grid, Solar or Hybrid Inverter the arrow should point **AWAY FROM THAT POWER SOURCE**.

On 3 phase sites note which phase each circuit is on. This will be required later when commissioning.  
Coloured stickers can be used for this.

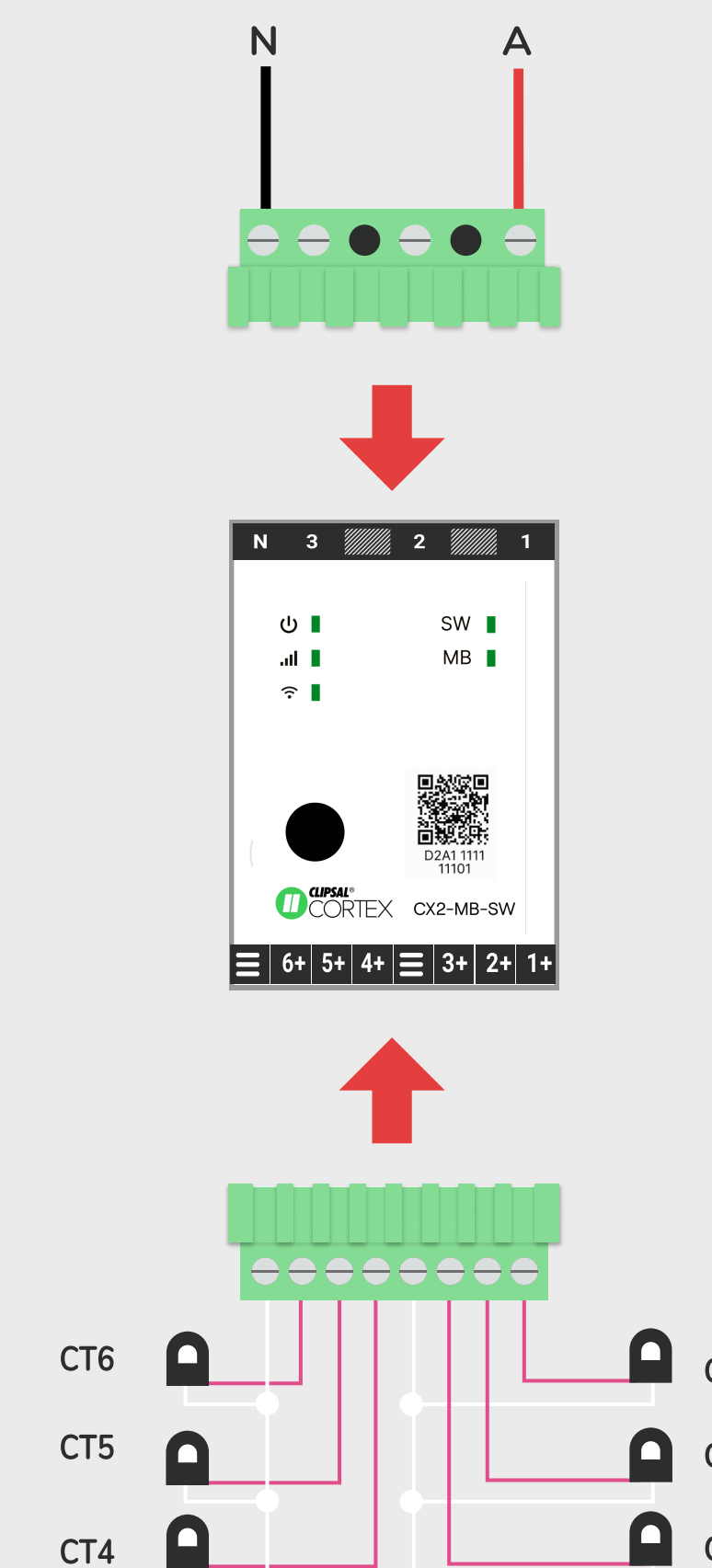
6. Wire Voltage Tails To Breaker



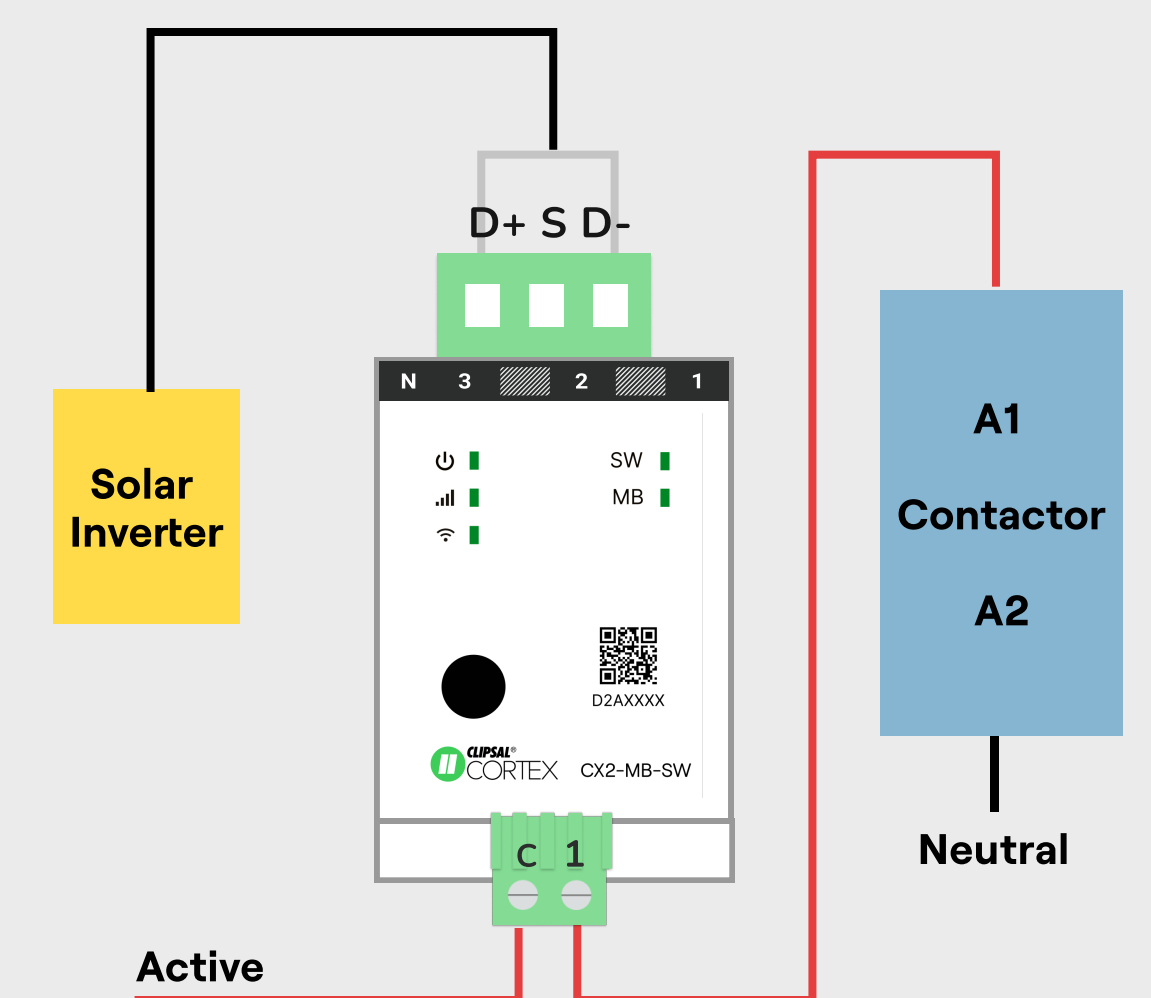
For 2 phase sites or sites with battery backup view wiring diagrams by scanning QR code:



7. Plug Voltage And Current Terminal Blocks Into Meter

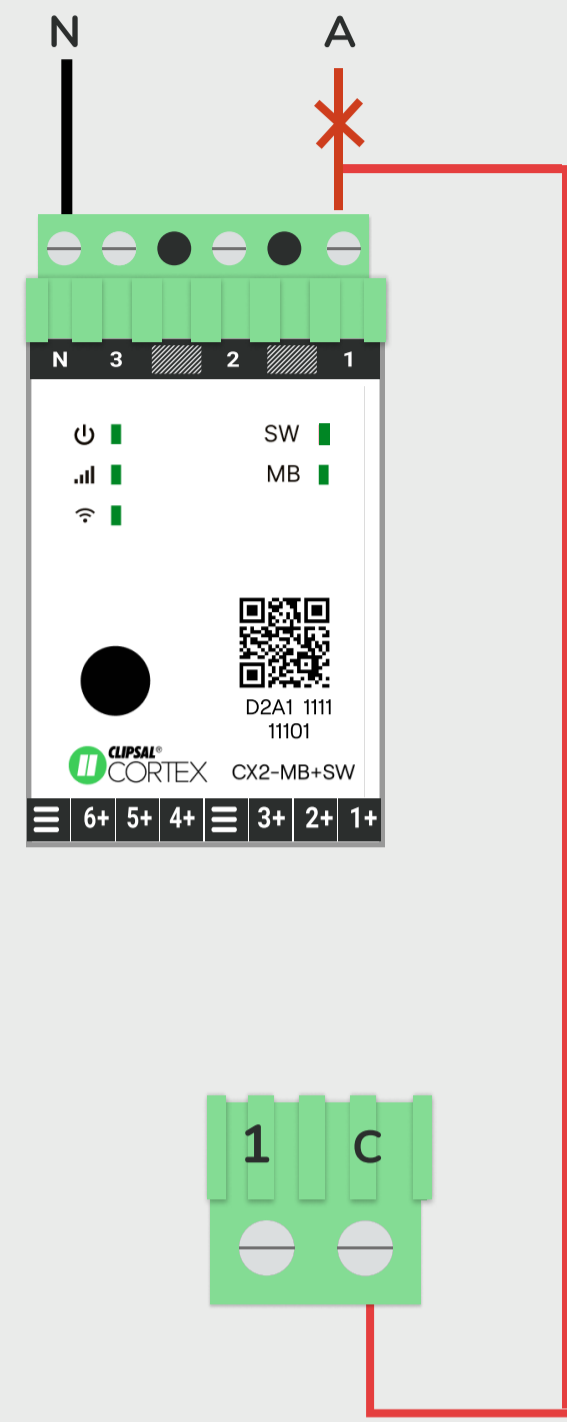


8. Connect Your Auxiliary Connections Where Applicable



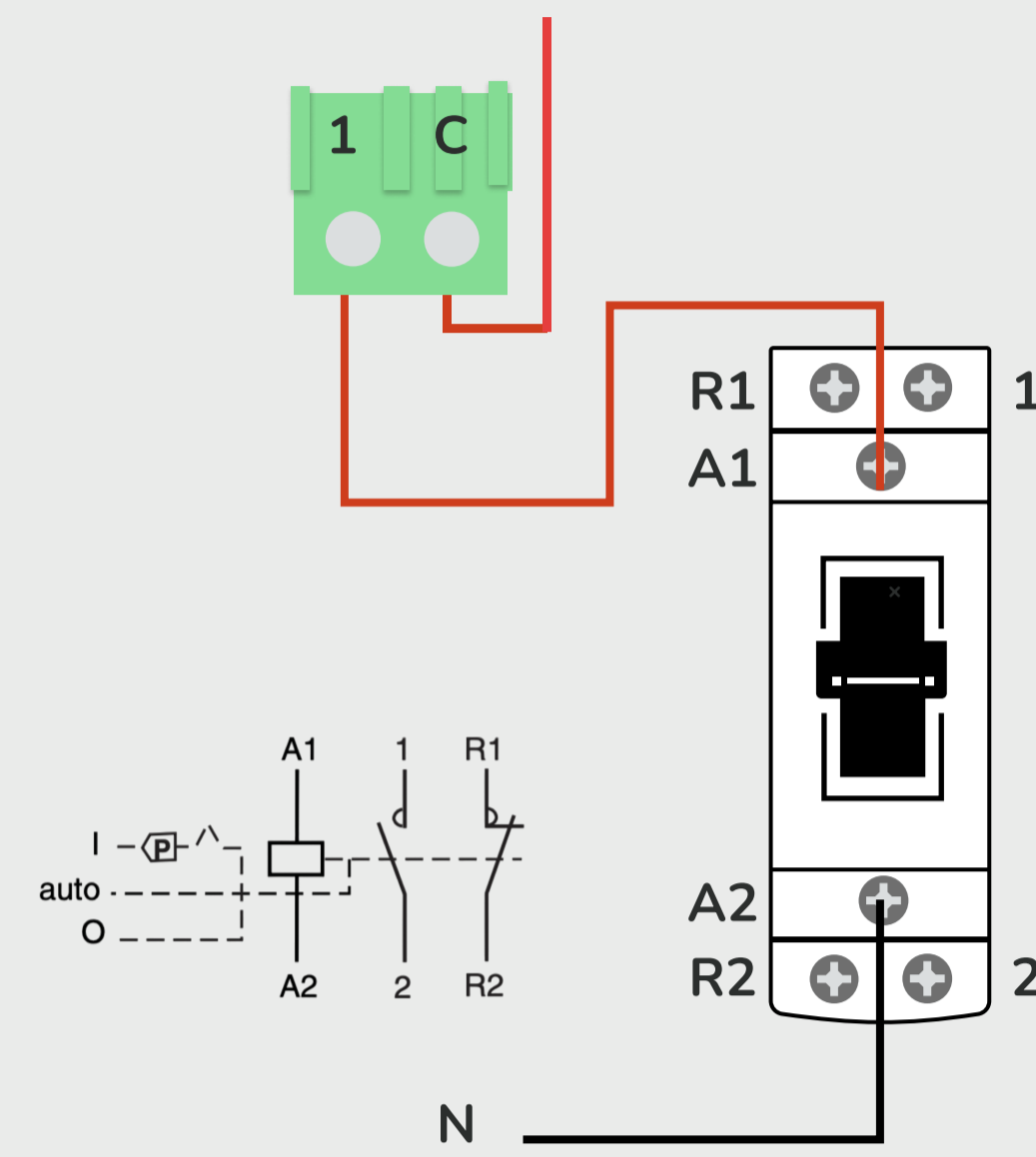
**For Load Switching**

**Wire Switching Terminal Block**



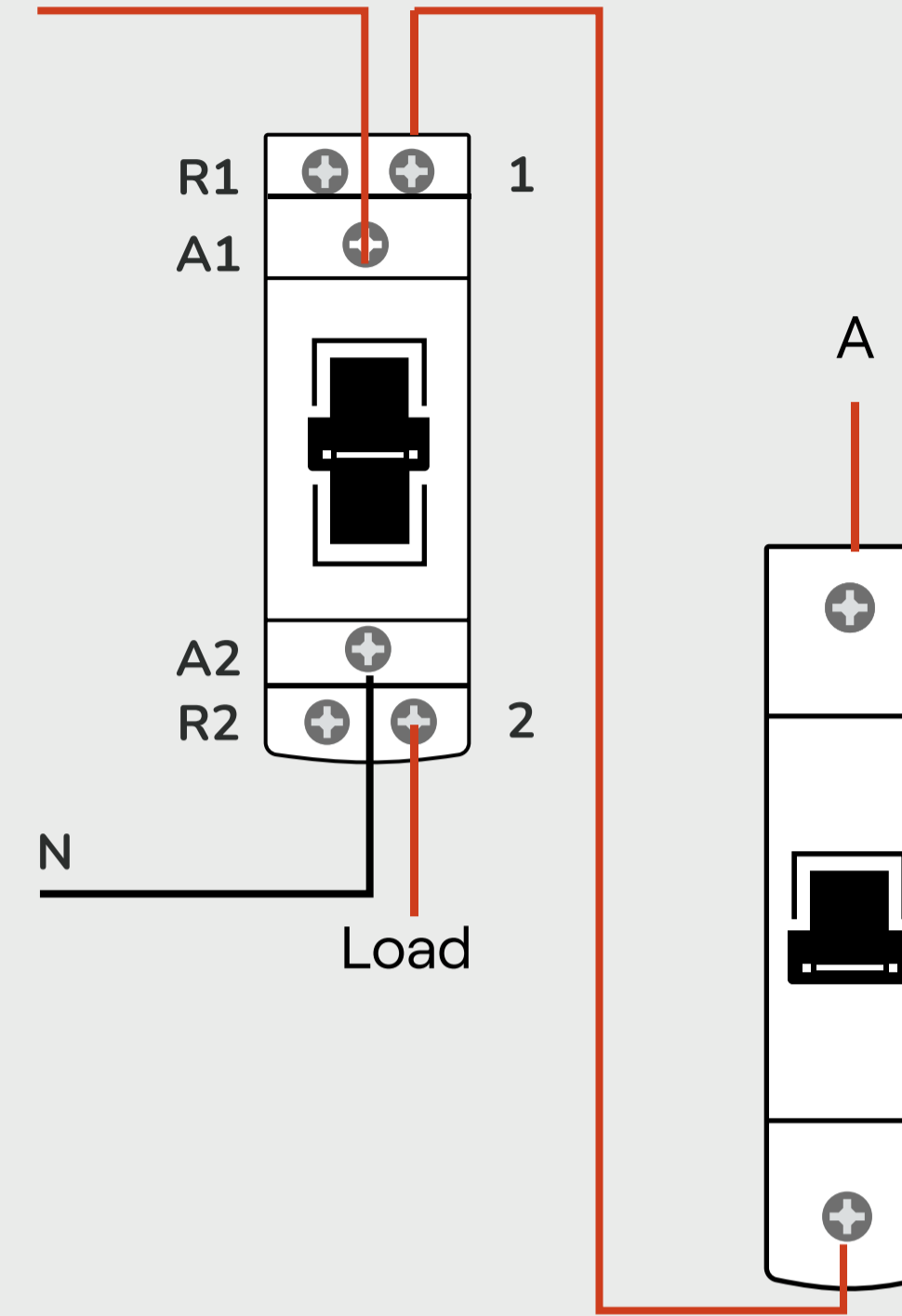
**For Load Switching**

**Wire Switch Output (1) Into Contactor Coil**



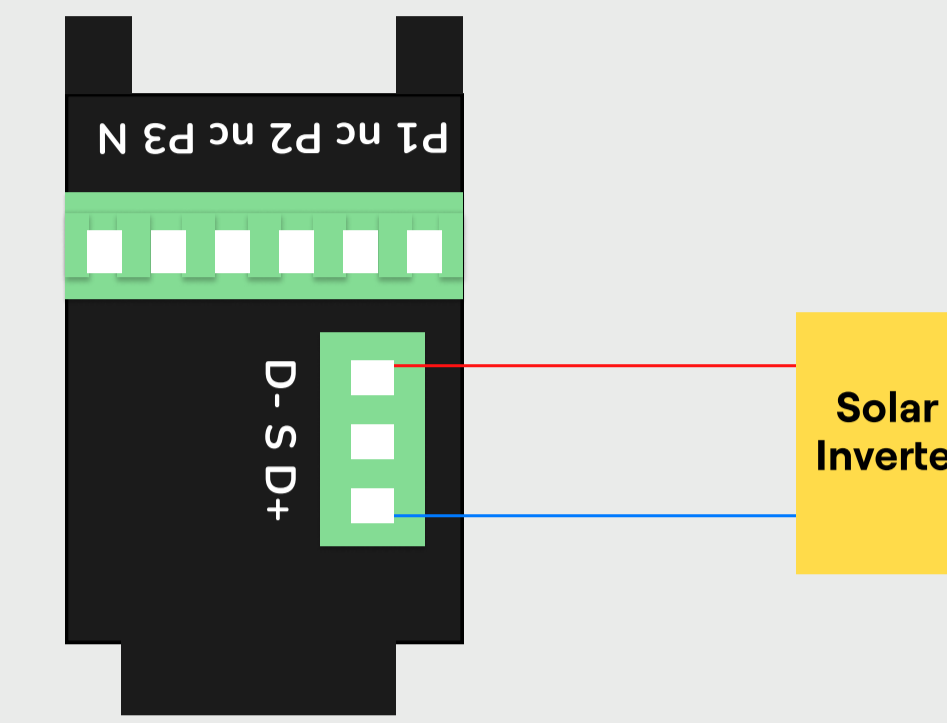
**For Load Switching**

**Wire The Contactor Into The Load**



**For Modbus Only**

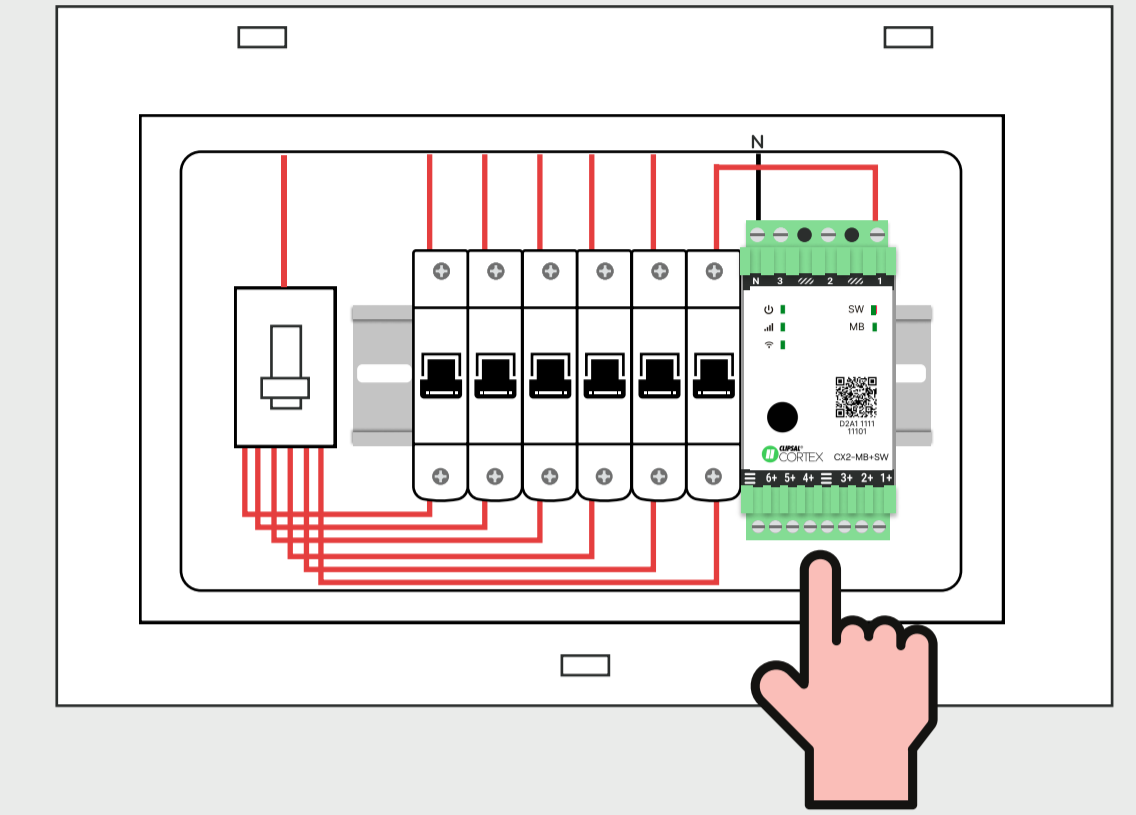
**Wire Modbus Connection Into Solar Inverter**



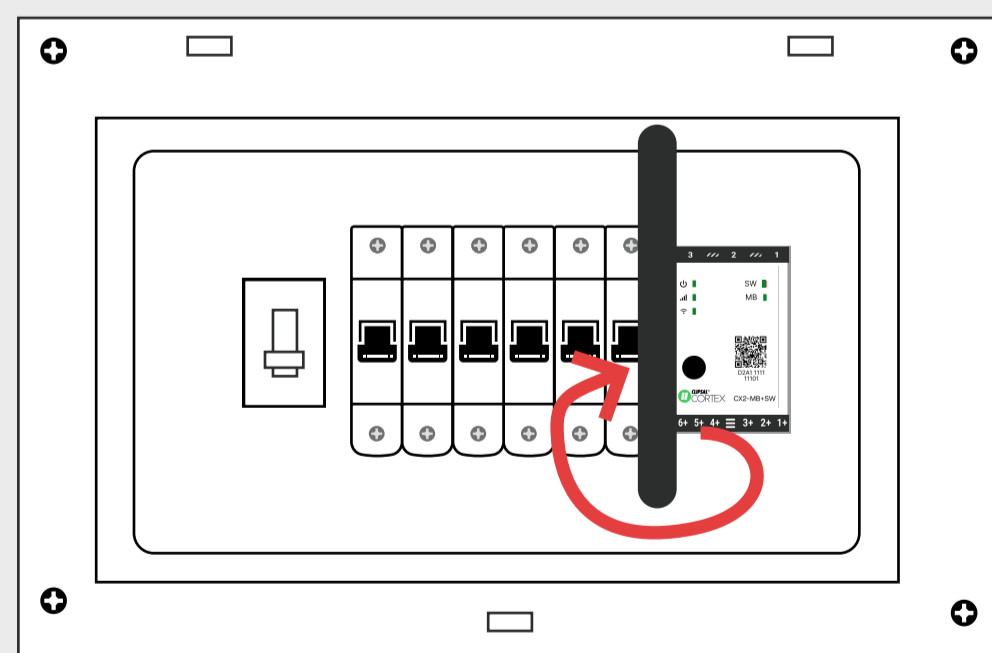
For Modbus (RS 485) Connection Details, Please Scan QR Code:



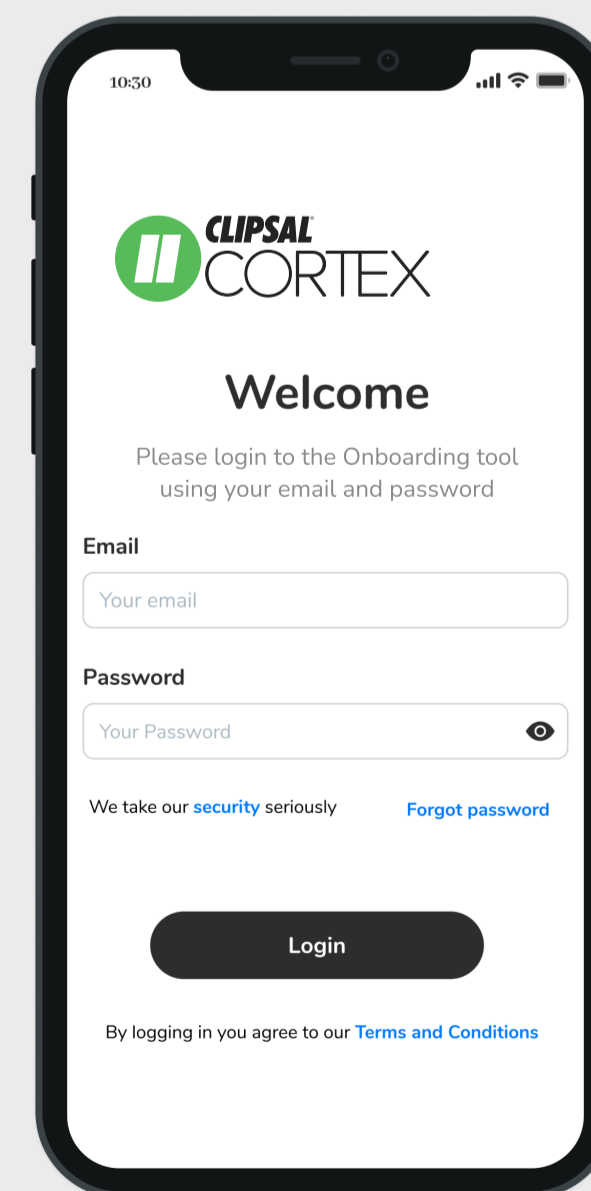
**9. Clamp Meter Onto DIN Rail And Replace Escutcheon**



**10. Screw On The Antenna And Switch On Power**

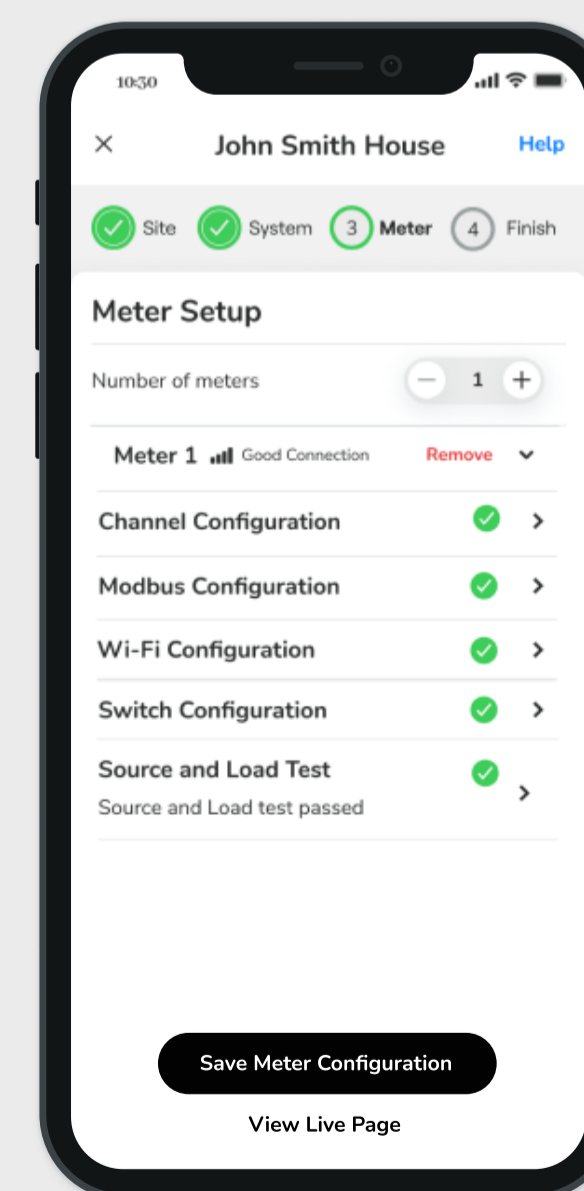


**11. Commission Using The Clipsal Cortex Fleet App**



Clipsal Cortex Fleet App

**12. Complete All In-App Steps. Invite Homeowner**



**Status Indicators**

Power	Cellular	Wi-Fi	Explanation
Green bar	Grey bar	Grey bar	Auditor is ON. Not connected
Green bar	Blinking green bar	Grey bar	Connecting to cellular network
Green bar	Green bar	Grey bar	Cellular network connected
Green bar	Green bar	Blinking green bar	Connecting to Wi-Fi network
Green bar	Green bar	Green bar	Wi-Fi network connected
<p><b>NOTE:</b> Cellular/Wi-Fi may blink briefly when sending data</p>			
<b>SW</b>		<b>Modbus</b>	
Green bar	Green bar	Green bar	Modbus device connected
Red bar	Red bar	Red bar	Modbus communication error Check wiring

Wi-Fi doesn't need to be connected for communication and is optional.



**Installer Hub**

To view installation hints, videos and troubleshooting guides see our website: [clipsalcortex.com](https://clipsalcortex.com)

**Support**

support.clipsalcortex.com  
(02) 8310 9220  
9am-5pm Mon-Fri AEDT